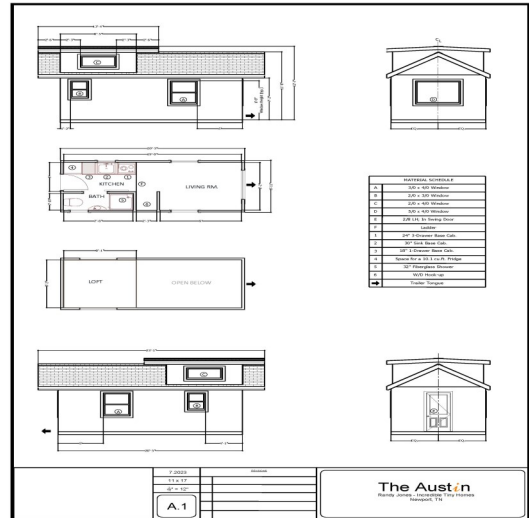


# INCREDIBLE TINY HOMES

## The Austin 8' x 20' Tiny Home



The Austin



- LP Siding (Refer to Color Chart)
- Metal Roofing (Refer to Color Chart)
- 30" Exterior Door
- Insulation – Close Cell Polyurethane Spray Foam
- Double Dormer
- Lifting Stairs w/ Wooden Hand Rails (On Dormer Model Only)
- Ample Electric Outlets & Switches throughout Home
- Farm Style Sink W/ Faucet
- Full Size Kitchen Cabinets
- Open Kitchen Shelving
- Washer / Dryer Hook-up
- 19 gallon electric Water Heater
- Bathroom Exhaust Fan
- Air Exchanger
- 9000 BTU 110v Mini Split
- Vinyl Flooring ( Refer to Color Chart)
- White Painted Walls – Interior
- Natural wood Ceiling & Trim – Polyurethane
- Cook Top
- Range Hood
- Ceiling Fan
- Dimmable LED Lights
- Sliding Barn Style Bathroom door
- Standard Residential Elongated Toilet
- 1/2 Moon Bathroom Sink
- 32" Shower Stall
- ANSI/NFPA Certification

Window Notes:  
Vinyl Single Hung White Windows  
With Screens

Exterior Water Spigot  
(1) Exterior Outlets  
(3) Exterior Lights  
(3) Wood Window Awnings  
Exterior Flower Boxes



**\$57,900.00**

*Price, design and availability subject to change without notice*

Phone: 423-438-0111  
E-mail: [sales@incredibletinyhomes.com](mailto:sales@incredibletinyhomes.com)  
850 Industrial Rd.  
Newport, TN 37821

