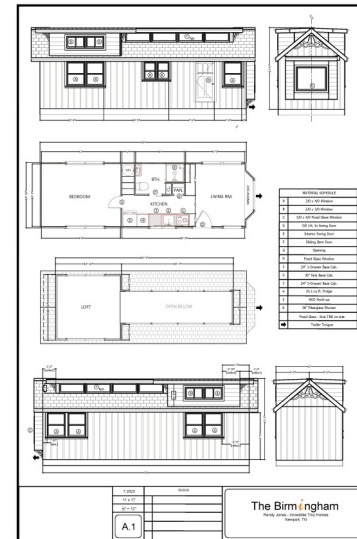


INCREDIBLE TINY HOMES

The Birmingham 10' x 34' Tiny Home



- LP Siding used for Lap Siding, Board & Baton Siding (See Color Chart)
- Stucco ONLY on Bay Window
- Shingle & Metal Roofing (METAL See Color Chart)
- 36" Exterior Door
- Insulation – Close Cell Polyurethane Spray Foam
- Double Dormer
- Stairs
- Ample Electric Outlets & Switches throughout Home
- Kitchen Sink W/ Faucet
- Full Size Kitchen Cabinets
- Open Kitchen Shelving
- 19 gallon electric Water Heater
- Bathroom Exhaust Fan
- Air Exchanger
- Vinyl Flooring See Color Chart)
- White Painted Walls – Interior
- Natural wood Ceiling & Trim – Polyurethane
- Bay Window in Living Area
- Cook Top
- Range Hood
- Ceiling Fan
- Dimmable LED Lights
- Sliding Barn Style Bathroom door
- Standard Residential Elongated Toilet
- Bathroom Vanity
- 36" Shower Stall
- Washer / Dryer Hook-Up
- Enclosed Bedroom w/ Standard Interior door
- 2 Closets

Window Notes:

- A – 3.0 / 4.0
- B – 2.0 / 3.0
- C – Egress Window
- D – 5 x 4 Picture Window
- * Cupola Glass Indirect Light Dormer

Exterior

- Exterior Water Spigot (1) Exterior Outlets (3) Exterior Lights (3) Wood Window Awnings, Exterior Flower Boxes



\$104,900.00

Price, design and availability subject to change without notice

Phone: 423-438-0111
 E-mail: sales@incredibletinyhomes.com
 850 Industrial Rd.
 Newport, TN 37821

