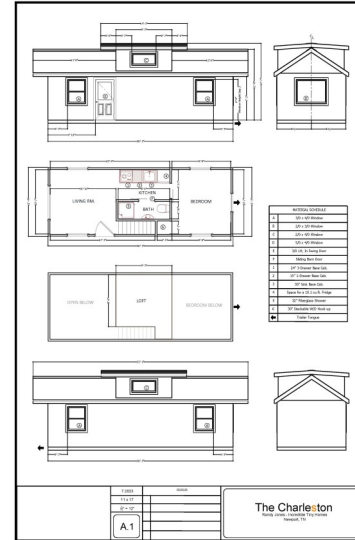


INCREDIBLE TINY HOMES

The Charleston 10' x 30' Tiny Home



- LP Siding (See Color Chart)
- Metal Roofing (See Color Chart)
- 36" Exterior Door
- Insulation – Close Cell Polyurethane Spray Foam
- Double Dormer
- Stairs
- Ample Electric Outlets & Switches throughout Home
- Kitchen Sink W/ Faucet
- Full Size Kitchen Cabinets
- 19 gallon electric Water Heater
- Bathroom Exhaust Fan
- Air Exchanger
- 9000 BTU 110v Mini Split

- Vinyl Flooring (Color see below)
- White Painted Walls – Interior
- Natural wood Ceiling & Trim – Polyurethane
- Cook Top
- Range Hood
- Ceiling Fan
- Dimmable LED Lights
- Sliding Barn Style Bathroom door
- Standard Residential Elongated Toilet
- Bathroom Vanity
- 32" Shower Stall
- Washer / Dryer Hook-up
- ANSI/NFPA Certification

Window Notes:

- Vinyl Single Hung White Windows
- A - 2.0 / 3.0 with screens
- B - 3.0 / 4.0 with screens
- C - 5.0 / 4.0 Picture Window
- D - 36" 1/2 Glass Door (Right Hand)
- E - 3.0 / 3.0 Single Hung
- F - Egress Windows

Exterior:

- Exterior Water Spigot (1)
- Exterior Outlets (3)
- Exterior Lights (3)
- Wood Window Awnings, Exterior Flower Boxes



\$89,900.00

Price, design and availability subject to change without notice

Phone: 423-438-0111
E-mail: sales@incredibletinyhomes.com
850 Industrial Rd.
Newport, TN 37821

