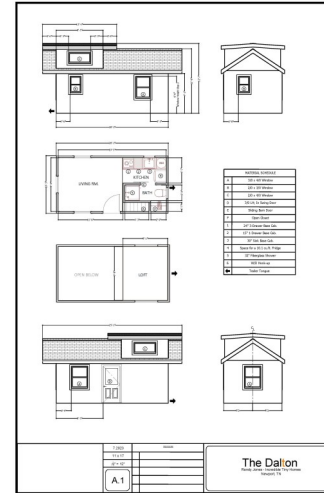


INCREDIBLE TINY HOMES

The Dalton 10' x 20' Tiny Home

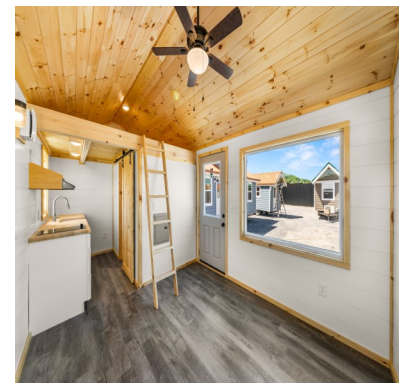


- LP Siding (See Color Chart)
- Metal Roofing (See Color Chart)
- 36" Exterior Door
- Insulation – Close Cell Polyurethane Spray Foam
- Double Dormer
- Stairs
- Ample Electric Outlets & Switches throughout Home
- Farm Style Sink W/ Faucet
- Full Size Kitchen Cabinets Kitchen Cabinets 30", 15', 24'
- Cook Top
- Range Hood
- 26" area for Refrigerator
- Washer / Dryer Hook-up
- Vinyl Flooring (See color Chart)
- White Painted Walls (Interior)
- Natural Wood Ceiling & Trim – Polyurethane
- Ceiling Fan
- Dimmable LED Lights
- Sliding Barn Style Bathroom door
- Standard Residential Elongated Toilet
- 32" Shower Stall
- 19 gallon electric Water Heater
- Bathroom Exhaust Fan
- Air Exchanger
- 9000 BTU 110v Mini Split
- ANSI/NFPA Certification

Window Notes:

Vinyl Single Hung White Windows
 A -2.0 / 3.0 with screens
 B -3.0 / 4.0 with screens
 C – 5.0 x 4.0 Picture Window
 Egress window

Exterior: Exterior Water Spigot (1) Exterior Outlets (3) Exterior Lights (3) Wood Window Awnings Exterior Flower Boxes



\$69,900.00

Price, design and availability subject to change without notice

Phone: 423-438-0111
 E-mail: sales@incredibletinyhomes.com
 850 Industrial Rd.
 Newport, TN 37821

