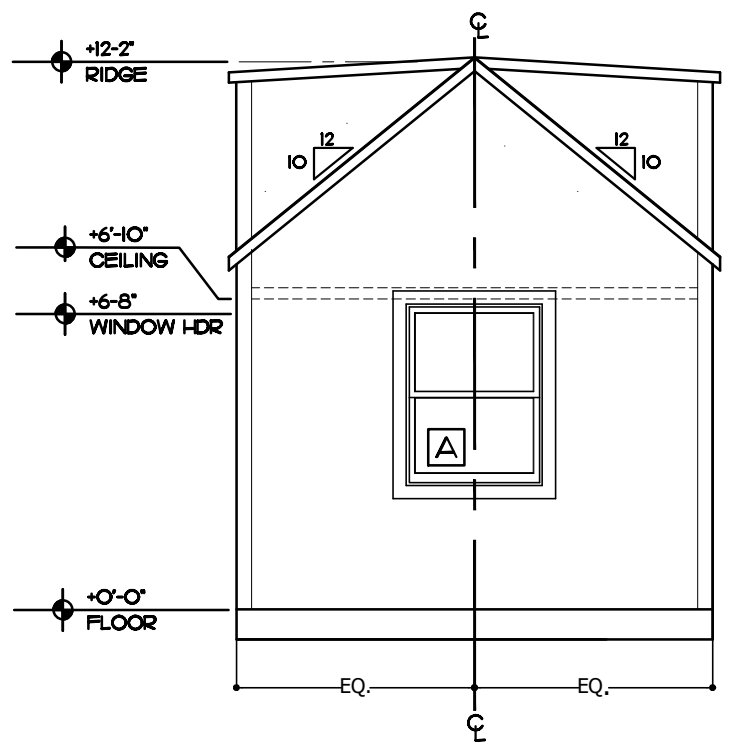
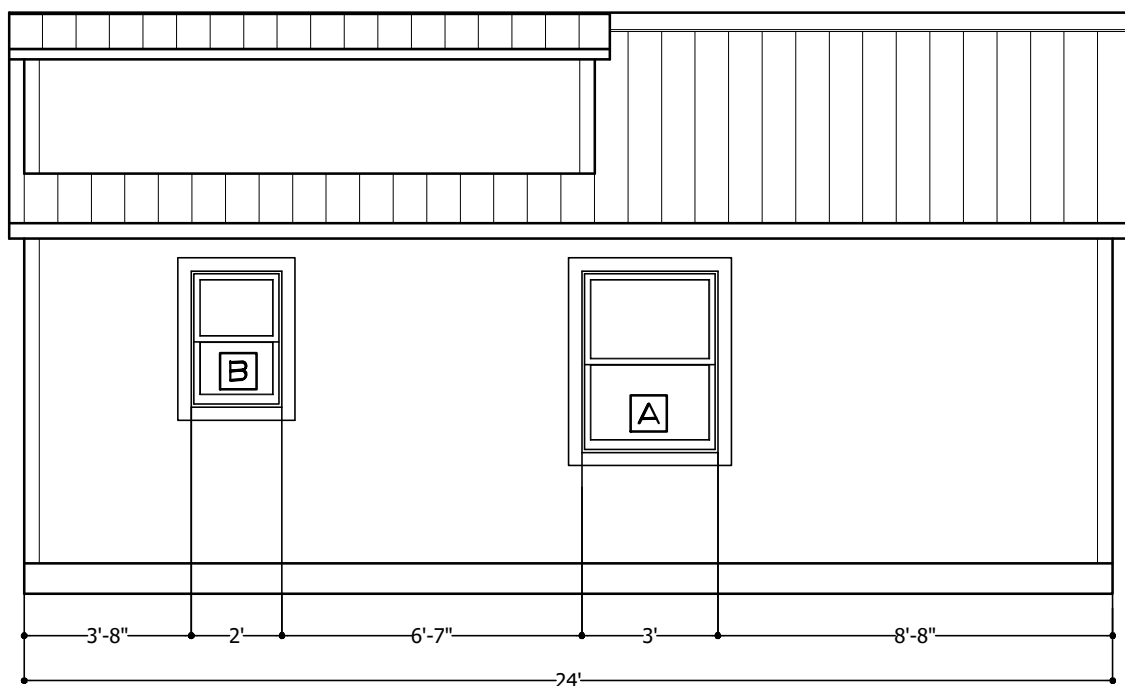


MATERIAL SCHEDULE - DORMERS			
-	WINDOWS	-	DOORS
A	3/0 X 4/0 SINGLE HUNG	D	36 X 80 EXTERIOR DOOR
B	2/0 X 3/0 SINGLE HUNG		
C	2/4 X 3/6 EGRESS		
-	CAB./FIXTURES/APPL.		
1	30" SINK BASE - 12" DOOR	5	STD. TOILET
2	24" [3] DRAWER BASE	6	SPACE FOR 10 CU. FT. REFRIG.
3	HOOKEP FOR 24" W/D COMBO	7	WATER HEATER (UNDER STAIRS)
4	36" SHOWER	➔	TRAILER TONGUE



5.2024

11 x 17

6" = 1'-0"

A.1

Notes

10x24 *Randy Jones Original*

Incredible Tiny Homes  
Newport, TN